

# AC Voltage Simple Logger® Models L205, L230 & L260



## Specifications

### ELECTRICAL

**Number of Channels:** One

**Measurement Range:**

- 0 to 25Vrms (L205)
- 0 to 300Vrms (L230)
- 0 to 600Vrms (L260)

**Input Connection:**

Recessed safety 4mm banana jacks

**Resolution:** 8 Bit

- L205: 12.5mV max
- L230: 250mV max
- L260: 500mV max

**Accuracy\*:** ±1% of Reading + Resolution

**Sample Rate:** 4096/hr max, decreases by 50% each time memory is full

**Storage Technique:**

Time Extension Recording™ (TXR™)

**Data Storage:** 8192 readings

**Power:** 9V Alkaline battery

**Battery Life:**

Up to one yr of recording @ 25°C

**Output:** RS-232 via DB-9 connector

**Indicators:** Red LED double flashes in LOGGING, single flashes in STANDBY, and is off in OFF mode

**Controls:** One button used to start and stop recording sessions and to turn the data logger on and off

### MECHANICAL

**Size:** 27/8 x 25/16 x 15/8"  
(73 x 59 x 4mm)

**Weight:** (with battery) 5 oz (140g)

**Mounting:** Base plate mounting holes or Velcro® pads



### ENVIRONMENTAL

**Operating Temperature:**

-4° to +158°F (-20 to +70°C)

**Storage Temperature:**

-4° to +174°F (-20 to +80°C)

**Relative Humidity:**

5 to 95% non-condensing

## Features

- Three input types to choose from:
  - Model L205  
0 to 25Vrms input (stray voltage)
  - Model L230  
0 to 300Vrms input
  - Model L260  
0 to 600Vrms input
- True RMS measurements

- Inputs via color coded safety Banana Jacks
- Scale automatically selected by software
- Includes test leads and alligator clips
- Double Insulation
- CE Mark

## Applications

- HVAC troubleshooting
- Line voltage monitoring
- Surge/Sag monitoring
- Stray voltage monitoring
- Dropout monitoring

## ORDERING INFORMATION

## CATALOG NO.

|   |               |
|---|---------------|
| Simple Logger® Model L205, Stray Voltage with Leads (0 to 25.5VAC Input) . . . . .  | Cat. #2116.05 |
| Simple Logger® Model L230, RMS Voltage with Leads (0 to 300VAC Input) . . . . .   | Cat. #2113.93 |
| Simple Logger® Model L260, RMS Voltage with Leads (0 to 600VAC Input) . . . . .   | Cat. #2113.94 |
| All AC Voltage Simple Loggers® are supplied with software (CD-ROM), 6 ft DB-9 RS-232 cable, 9V Alkaline battery, 5 ft lead set, and user manual |               |
| <b>Accessories</b>  |               |
| Safety Grip Probes, set of 2 . . . . .  | Cat. #2111.31 |
| 110V US Outlet Adaptor with Banana Jacks (for Models L230 or L260) . . . . .  | Cat. #2118.49 |
| Voltage Leads, (2) with clips, 5 ft. . . . .  | Cat. #2118.51 |



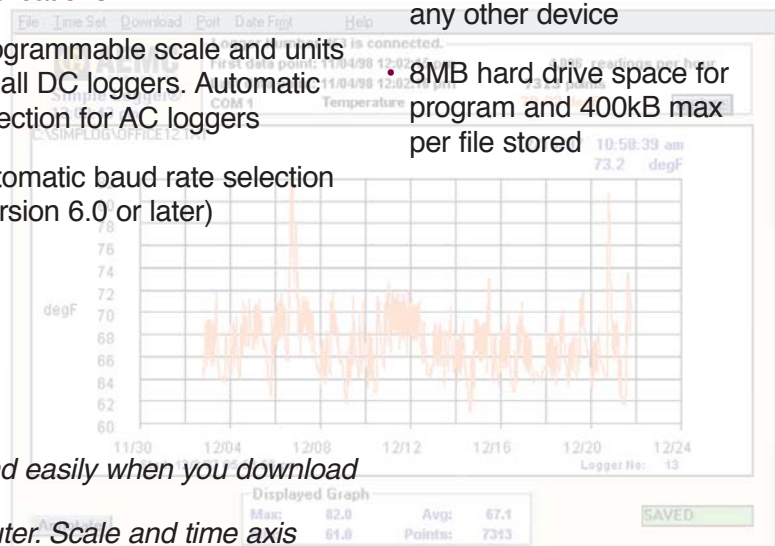
# Simple Logger® Software

## Features

- Very easy to setup and use — no programming required
- Statistics appear on screen: Max, Min, Avg, Date and Time
- On-Line display of data logger values
- Zoom capability with automatic statistics update
- User keyed text annotations
- Automatically displays values at the cursor position
- Export data to spreadsheet and database software
- Print both graphs and tabular listings
- Paste graphs into other applications
- Programmable scale and units for all DC loggers. Automatic selection for AC loggers
- Automatic baud rate selection (version 6.0 or later)

## Computer Requirements

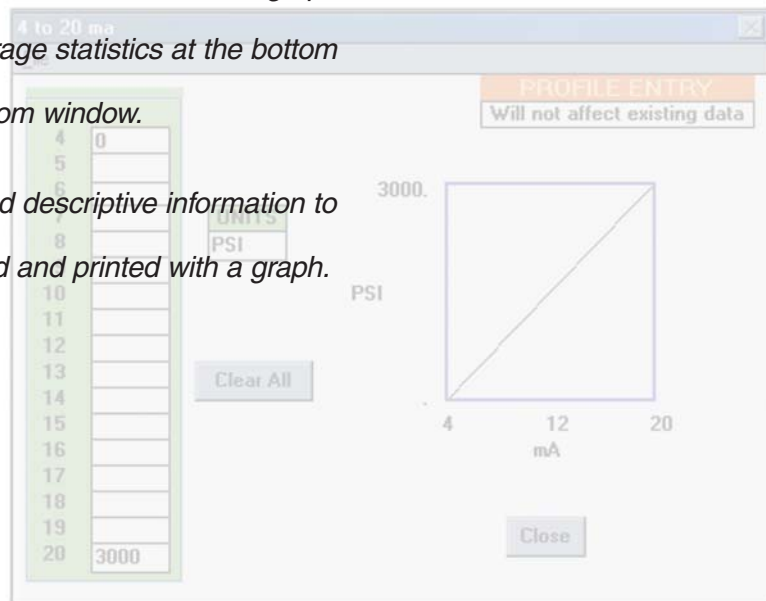
- 486 or higher
- 8MB of RAM
- Windows®95/98/2000/ME/XP or Windows®NT
- One serial port not in use by any other device
- 8MB hard drive space for program and 400kB max per file stored



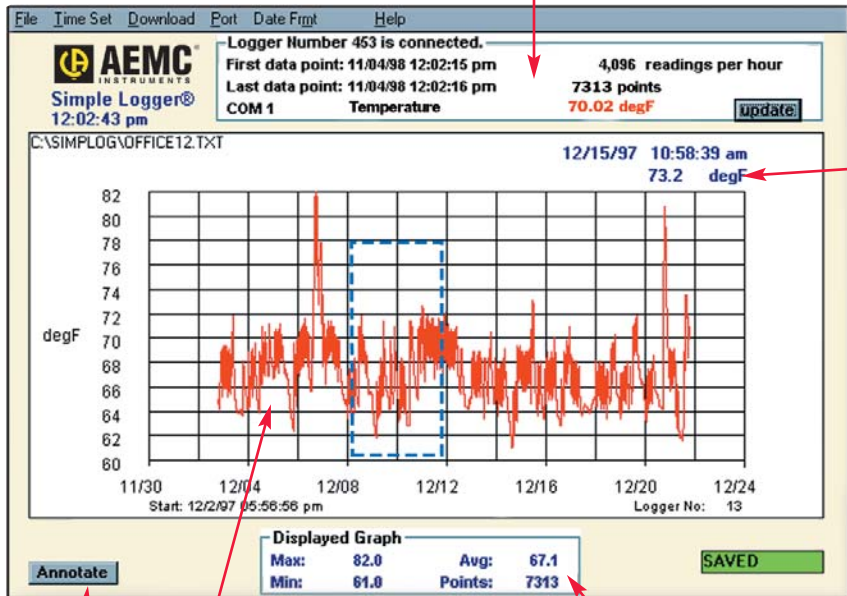
Plot graphs and view statistics quickly and easily when you download data from Simple Logger® to your computer. Scale and time axis update automatically.

Click and drag your mouse to zoom up the desired area of the graph for better viewing. The Min, Max and Average statistics at the bottom of the graph update automatically with zoom window.

Click the Annotate button to add a title and descriptive information to your graph. This information can be stored and printed with a graph.



On-line display of data

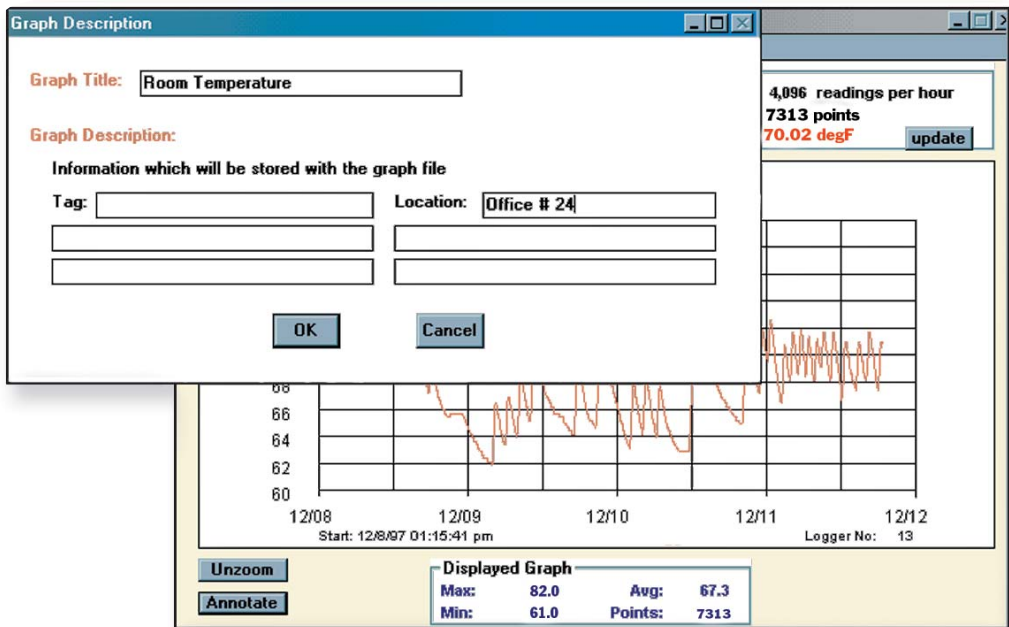


Automatic update of Y data at cursor position

Annotate button

Plot area with value and time data shown on the X and Y axis

Graph Statistics



Click the Annotate button to add a title and descriptive information to your graph. This information can be stored and printed with a graph.

## Contact Us

### United States & Canada:

Chauvin Arnoux<sup>®</sup>, Inc.  
d.b.a. AEMC<sup>®</sup> Instruments  
200 Foxborough Blvd.  
Foxborough, MA 02035 USA  
(508) 698-2115 • Fax (508) 698-2118  
[www.aemc.com](http://www.aemc.com)

**Customer Support – for placing an order, obtaining price & delivery:**  
[customerservice@aemc.com](mailto:customerservice@aemc.com)

**Sales Department – for general sales information:**  
[sales@aemc.com](mailto:sales@aemc.com)

**Repair and Calibration Service – for information on repair & calibration, obtaining a user manual:**  
[repair@aemc.com](mailto:repair@aemc.com)

**Technical and Product Application Support – for technical and application support:**  
[techinfo@aemc.com](mailto:techinfo@aemc.com)

**Webmaster – for information regarding [www.aemc.com](http://www.aemc.com):**  
[webmaster@aemc.com](mailto:webmaster@aemc.com)

### South America, Central America, Mexico, Caribbean, Australia & New Zealand:

Chauvin Arnoux<sup>®</sup>, Inc.  
d.b.a. AEMC<sup>®</sup> Instruments  
15 Faraday Drive  
Dover, NH 03820 USA  
(978) 526-7667 • Fax (978) 526-7605  
[export@aemc.com](mailto:export@aemc.com)  
[www.aemc.com](http://www.aemc.com)

### All other countries:

Chauvin Arnoux SCA  
190, rue Championnet  
75876 Paris Cedex 18, France  
33 1 44 85 45 28 • Fax 33 1 46 27 73 89  
[info@chauvin-arnoux.com](mailto:info@chauvin-arnoux.com)  
[www.chauvin-arnoux.com](http://www.chauvin-arnoux.com)