

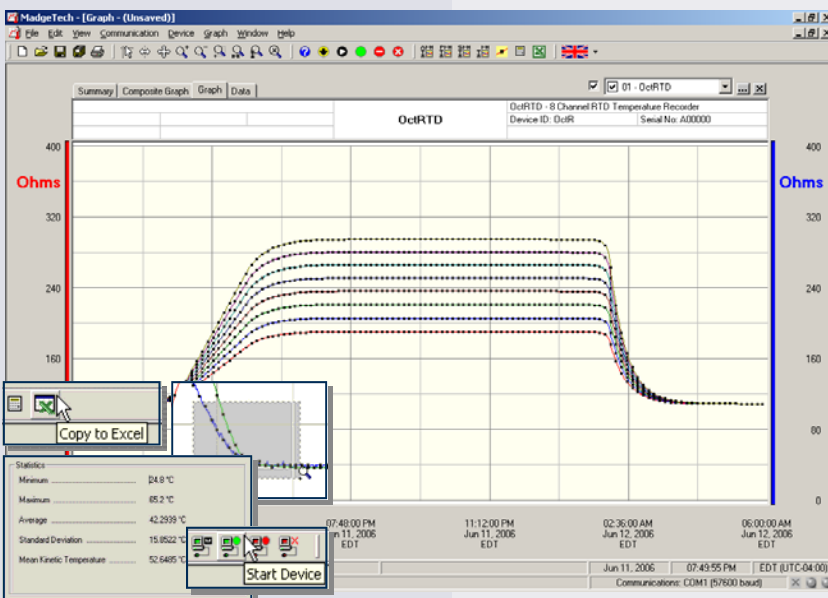
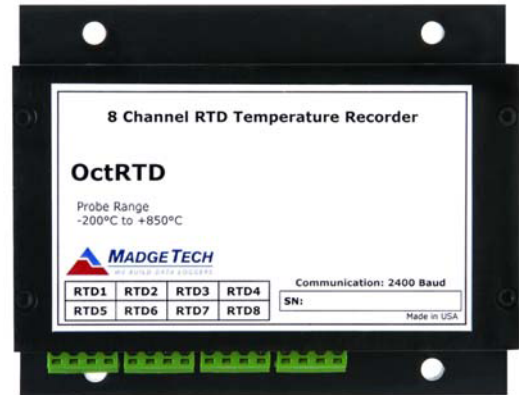
Features

- ±0.1°C Calibrated Accuracy
- N.I.S.T. traceable
- Real-time operation
- Low cost
- Programmable start time
- Reusable
- User-friendly
- CE compliant
- Accepts 2,3 and 4-wire RTD's

Applications

- Calibration chamber monitoring
- Process verification/validation
- Warehouse monitoring
- Precision temperature monitoring
- HVAC
- Clean rooms
- Medical/Pharmaceutical
- Museum monitoring
- Environmental studies
- Replace costly strip chart recorders

The OctRTD is an 8 channel, battery powered, stand alone, RTD based temperature recorder. This is an all-in-one compact, portable, easy to use device that will measure and record up to 10,922 measurements per channel. The storage medium is non-volatile solid state memory, providing maximum data security even if the battery becomes discharged. The device can be started and stopped directly from your computer and its small size allows it to fit almost anywhere. The OctRTD makes data retrieval quick and easy. Simply plug it into an empty COM or USB port and our user-friendly software does the rest.



MadgeTech Data Recorder Software displays temperature data in an easy to use graph.

The Windows[®]-based software package allows the user to effortlessly collect, display and analyze data. A variety of powerful tools allow you to examine, export, and print professional looking data with just a click of the mouse.

Click [MadgeTech Software](http://www.MadgeTech.com) for more information or to download the software.

OCTRTD SPECIFICATIONS *

Temperature **

Measurement Range: -200 to +850°C
 Resolution: 0.01°C
 ***Calibrated Accuracy: ±0.1°C @ 25°C ambient
 Specified Accuracy Range: -200 to +850°C

Start Modes: Software programmable immediate start or delay start up to six months in advance, programmable in software
 Real Time Recording: May be used with PC to monitor and record data in real time

Resistance

Nominal Range: 0 to 500 Ω
 Resolution: 0.001 Ω
 ***Calibrated Accuracy: ±0.030 Ω @ 25°C ambient
 Specified Accuracy Range: 0 to 500 Ω
 Channels: 8
 Input Connection: Removable screw terminal; 2,3 or 4 wire interface
 Input Connection: Removable screw terminal; 2,3 or 4 wire interface
 Input Connection: Removable screw terminal; 2,3 or 4 wire interface

Memory: 10,922 readings per channel, for a total of 87,376 readings
 Reading Rate: 1 reading every 2 seconds to 1 every 12 hours
 Calibration: Digital calibration through software
 Calibration Date: Automatically recorded within device
 Battery Type: 9V lithium or alkaline battery included, user replaceable
 Battery Life: 1 year typical
 Data Format: Date and time stamped °C, °F, K, °R; Ω
 Time Accuracy: ±1 minute/month (at 20°C, RS232 port not in use)
 Computer Interface: PC serial or USB (interface cable required); 2,400 baud

Temperature Effect on Span: < 2.5ppm/°C; < 1.0ppm/°C typical

Software: Windows 95/98/ME/NT/2000/XP/Vista based software
 Operating Environment: -20 to +60°C, 0 to 95%RH non-condensing
 Dimensions: 3.5" x 4.4" x 1.5" (89mm x 112mm x 39mm)
 Weight: 15.9 oz (450 g)
 Approvals: CE

**Temperature specifications based on ideal 100 Ω Pt RTD compliant with IEC 751 (1983) and ITS-90, 5000 Ω FSR (accuracy based on 36" lead wire RTD with 4 wire configuration)

***Calibrated accuracies based on standard MadgeTech calibrations for 0 to 200 Ω range.

BATTERY WARNING: DISCARD USED BATTERY PROMPTLY. KEEP OUT OF REACH OF CHILDREN. DO NOT DISPOSE OF IN FIRE. RECHARGE, PUT IN BACKWARDS, DISASSEMBLE, OR MIX WITH OTHER BATTERY TYPES. MAY EXPLODE, FLAME OR LEAK AND CAUSE PERSONAL INJURY.

SOFTWARE FEATURES

Multiple Graphs: Simultaneously analyze data from several units or deployments; easily switch to a single data series
 Graphical Cursor: One click displays readings by time, value, parameter or sample number
 Data Table: Instantly access tabular view for detailed dates, times, values, and annotations
 Scaling Options: Autoscale function fits data to the screen, or allows user to manually enter their own values
 Formatting Options: Change colors, line styles, plotting options, show or hide channels quickly
 Statistics: Calculate averages, min, max, standard deviation, and mean kinetic temperature with the touch of a button
 Export Data: Export data in a variety of common formats, or switch to Excel® with a single click
 Calibration: Automatically calculate and store calibration parameters
 Logger Configuration: Easy set up and launch of data loggers with immediate or delayed start, preferred sample rate, and device ID
 Communications: Automatically sets up communications port, or lets user select configuration

*SPECIFICATIONS ARE SUBJECT TO CHANGE WITHOUT NOTICE. SPECIFIC WARRANTY AND REMEDY LIMITATIONS APPLY. CALL 1-603-456-2011 OR GO TO WWW.MADGETECH.COM FOR DETAILS.

ORDERING INFORMATION

Model	Description	Price (U.S.)
OCTRTD	8 Channel RTD Temperature Recorder	\$999.00
IFC110	Software, manual and RS232 interface cable	\$99.00
IFC200	Software, manual and USB interface cable	\$119.00
NIST	N.I.S.T. Calibration Certificate	Call for Pricing
U9VL-J	Replacement battery for OctRTD	\$15.00

ASK ABOUT OUR OTHER DATA RECORDERS

Temperature	Pulse/Event/State
Humidity	Low Level Current
Pressure	Low Level Voltage
pH	RF Transmitters
Level	Intrinsically Safe
Shock	Spectral Vibration
LCD Display	



DOC-1004009-00 REV F 2010.03.17

Authorized Distributor

Optimum Energy Products Ltd · www.DataLoggerStore.com · info@dataloggerstore.com · 1.877.766.5412