

Features

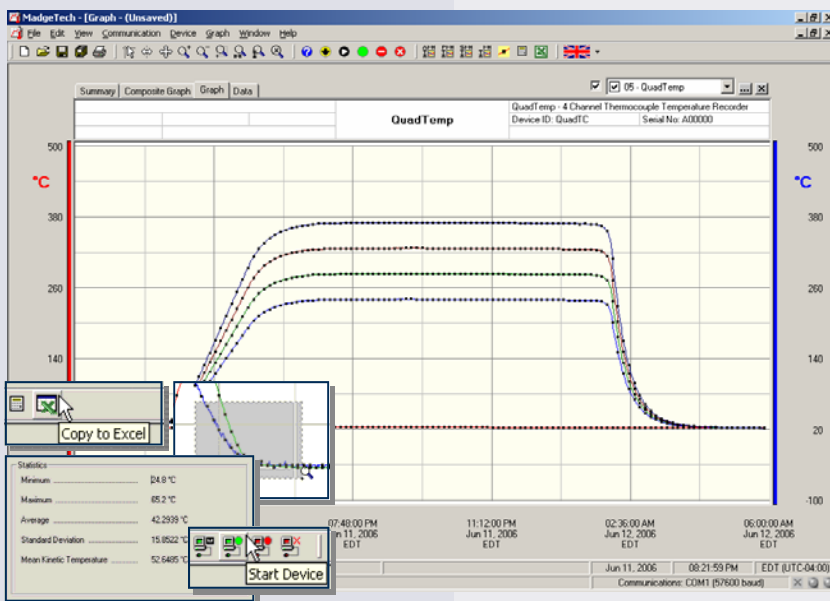
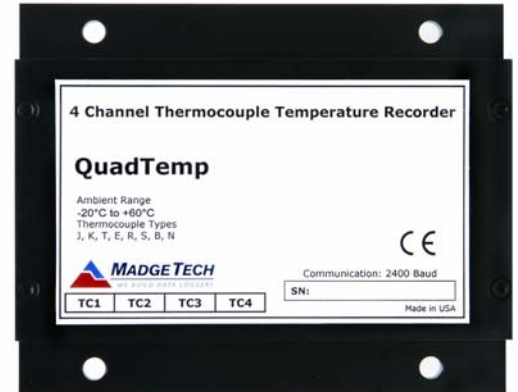
- Self contained
- Compact size
- Accepts thermocouple types J, K, T, E, R, S, B, N
- Automatic cold junction compensation
- Real-time operation
- Programmable start time
- User-friendly
- N.I.S.T. traceable
- CE compliant

Applications

- Extreme temperature monitoring
- Warehouse monitoring
- HVAC
- Medical and Pharmaceutical
- Museum monitoring
- Replace costly strip chart recorders
- Implement HACCP programs

The QuadTemp is a four channel, battery powered, stand alone thermocouple recorder. This is an all-in-one compact, portable, easy to use device that will measure and record up to 26,214

measurements per channel. The storage medium is non-volatile solid state memory, providing maximum data security even if the battery becomes discharged. The device can be started and stopped directly from your computer and its small size allows it to fit almost anywhere. The QuadTemp makes data retrieval quick and easy. Simply plug it into an empty COM or USB port and our user-friendly software does the rest.



MadgeTech Data Recorder Software displays temperature data in an easy to use graph.

The Windows®-based software package allows the user to effortlessly collect, display and analyze data. A variety of powerful tools allow you to examine, export, and print professional looking data with just a click of the mouse.

Click [MadgeTech Software](#) for more information or to download the software.

QUADTEMP SPECIFICATIONS*

Internal Channel

Temperature Range: -20 to +60°C

Temperature Resolution: 0.1°C

Calibrated Accuracy: ±0.5°C (0 to +50°C)

4 Remote Channels

Remote Channel

Thermocouple Types: J,K,T,E,R,S,B,N

Thermocouple connection: Female subminiature (SMP)

Cold Junction Compensation: Automatic, based on internal channel

Maximum Thermocouple Resistance: 1000Ω, <100Ω recommended

Thermocouple	Range (°C)	Resolution	Accuracy
J	-210 to +760	0.1 °C	±0.5 °C
K	-270 to +1370	0.1 °C	±0.5 °C
T	-270 to +400	0.1 °C	±0.5 °C
E	-270 to +980	0.1 °C	±0.5 °C
R	-50 to +1760	0.5 °C	±2.0 °C
S	-50 to +1760	0.5 °C	±2.0 °C
B	+50 to +1820	0.5 °C	±2.0 °C
N	-270 to +1300	0.1 °C	±0.5 °C

Start Time: Software programmable start time and date, up to six months in advance

Real Time Recording: May be used with PC to monitor and record data in real time

Memory: 26,214 readings per channel (131,070 total memory)

Reading Interval: 1 reading every 5 seconds to 1 every 12 hours

Calibration: Digital calibration through software

Calibration Date: Automatically recorded within device

Power: 9 Volt lithium or alkaline battery included

*User Replaceable Battery: 1 year typical

Data Format: Date and time stamped °C, °F, K, °R

Time Accuracy: ±1 minute/month (at 20°C, RS232 port not in use)

Computer Interface: PC serial or USB (Interface cable required); 2,400 baud

Software: Windows 95/98/ME/NT/2000/XP based software

Operating Environment: -20 to +60°C, 0 to 95%RH non-condensing

Dimensions: 3.5" x 4.4" x 1.0" (89mm x 112mm x 26mm)

Weight: 11.9 oz (335 g)

Approvals: CE

BATTERY WARNING: DISCARD USED BATTERY PROMPTLY. KEEP OUT OF REACH OF CHILDREN. DO NOT DISPOSE OF IN FIRE, RECHARGE, PUT IN BACKWARDS, DISASSEMBLE, OR MIX WITH OTHER BATTERY TYPES. MAY EXPLODE, FLAME, OR LEAK AND CAUSE PERSONAL INJURY.

SOFTWARE FEATURES

Multiple Graphs: Simultaneously analyze data from several units or deployments; easily switch to a single data series

Statistics: Calculate averages, min, max, standard deviation, and mean kinetic temperature with the touch of a button

Graphical Cursor: One click displays readings by time, value, parameter or sample number

Export Data: Export data in a variety of common formats, or switch to Excel® with a single click

Data Table: Instantly access tabular view for detailed dates, times, values, and annotations

Calibration: Automatically calculate and store calibration parameters

Scaling Options: Autoscale function fits data to the screen, or allows user to manually enter their own values

Logger Configuration: Easy set up and launch of data loggers with immediate or delayed start, preferred sample rate, and device ID

Formatting Options: Change colors, line styles, plotting options, show or hide channels quickly

Communications: Automatically sets up communications port, or lets user select configuration

*SPECIFICATIONS ARE SUBJECT TO CHANGE WITHOUT NOTICE. SPECIFIC WARRANTY AND REMEDY LIMITATIONS APPLY. CALL 1-603-456-2011 OR GO TO WWW.MADGETECH.COM FOR DETAILS.

ORDERING INFORMATION

Model	Description	Price (U.S.)
QUADTEMP	4 Channel Thermocouple Recorder	\$599.00
IFC110	Software, manual and RS232 interface cable	\$99.00
IFC200	Software, manual and USB interface cable	\$119.00
NIST	N.I.S.T. Calibration Certificate	Call for Pricing
U9VL-J	Replacement battery for QuadTemp	\$15.00

ASK ABOUT OUR OTHER DATA RECORDERS

Temperature	Pulse/Event/State
Humidity	Low Level Current
Pressure	Low Level Voltage
pH	RF Transmitters
Level	Intrinsically Safe
Shock	Spectral Vibration

For Quantity Discounts call 603-456-2011 or email sales@madgetech.com

