

TEMPRETRIEVER

LOW COST REUSABLE TEMPERATURE RECORDER

Features

- Low cost
- Pushbutton start/stop
- LED alarm indication
- User selectable alarm limits
- Real-time operation
- Programmable start time
- Reusable
- Miniature size
- 38,400 baud offload speed
- CE Approved

Applications

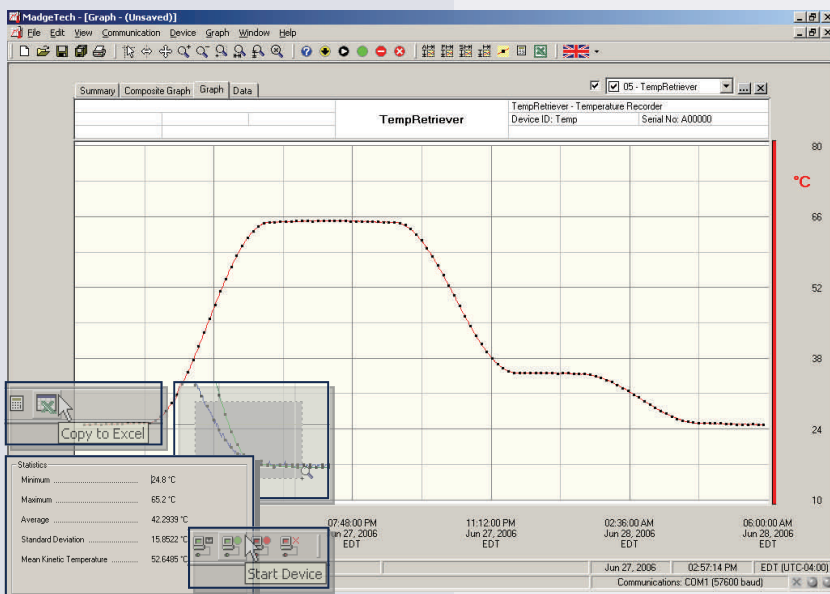
- Record temperature of perishable goods in transit
- Warehouse monitoring
- HVAC
- Medical and Pharmaceutical
- Museum monitoring
- Environmental studies
- Replace costly strip chart recorders
- Implement HACCP programs



The TempRetriever is a low cost, reusable temperature recording device which allows for a myriad of applications. The device excels in dry applications such as shipping, museums, R&D, warehouses and HVAC. It boasts an accuracy of $\pm 0.5^{\circ}\text{C}$ and a resolution of 0.1°C . The TempRetriever can store up to 16,383 readings in its non-volatile memory and coupled with up to a one year battery life and LED alarm indication makes this a perfect temperature recorder when keeping costs down is paramount.

The MadgeTech software includes a full host of features that allows the user to set the start method (i.e. pushbutton, delayed start or start now), the start date and time, sample rate, high/low alarm limits, 6-character device ID and a 16-character extended ID. Data can be offloaded and displayed in $^{\circ}\text{C}$, $^{\circ}\text{F}$, K and $^{\circ}\text{R}$. The software will also automatically calculate Mean Kinetic Temperature as well as other useful statistics to simplify analysis. For additional custom analysis, the data can be quickly exported into a MS Excel[®] spreadsheet with the click of a button.

Industries such as education, research, and perishable goods transport will all benefit from the remarkable value this device represents.



MadgeTech Data Recorder Software

Reports temperature data in an easy to use graph.

The Windows[®]-based software package allows the user to effortlessly collect, display and analyze data. A variety of powerful tools allow you to examine, export, and print professional looking data with just a click of the mouse.

Click [MadgeTech Software](#) for more information or to download the software.

TEMPRETRIEVER SPECIFICATIONS*

| | |
|---|---|
| Temperature Sensor: Semiconductor | Calibration Date: Automatically recorded within device |
| Temperature Range: -40 to +80°C | Power: 3.6 V lithium battery included |
| Temperature Resolution: 0.1°C | User Replaceable Battery: 1 year typical |
| Calibrated Accuracy: ±0.5°C (0 to +50°C) | Data Format: Date and time stamped °C, °F, °K, °R |
| Alarm: User selectable high and low limits, blinking LED Indicator | Time Accuracy: ±1 minute/month (at 20°C, RS232 port not in use) |
| Start Time: Software programmable start time and date up to six months in advance; or external pushbutton start/stop | Computer Interface: PC serial or USB (interface cable required); 2,400baud |
| Real Time Recording: May be used with PC to monitor and record data in real-time | Software: Windows 95/98/ME/NT/2000/XP based software |
| Reading Interval: 1 reading every 2 seconds to 1 every 12 hours | Operating Environment: -40 to +80°C, 0 to 95%RH non-condensing |
| Calibration: Digital calibration through software | Dimensions: 1.4" x 2.2" x 0.6" (36mm x 56mm x 16mm) |
| | Weight: 0.8 oz (23 g) |
| | Materials: ABS plastic |
| | Approvals: CE |

BATTERY WARNING: FIRE, EXPLOSION, AND SEVERE BURN HAZARD.
DO NOT RECHARGE, DISASSEMBLE, HEAT ABOVE 212°F,
INCINERATE OR EXPOSE CONTENTS TO WATER.

SOFTWARE FEATURES

| | |
|--|---|
| Multiple Graphs: Simultaneously analyze data from several units or deployments; easily switch to a single data series | Statistics: Calculate averages, min, max, standard deviation, and mean kinetic temperature with the touch of a button |
| Real-Time Recording: Collect and display data in real-time while continuing to log | Export Data: Export data in a variety of common formats, or switch to Excel® with a single click |
| Graphical Cursor: One click displays readings by time, value, parameter or sample number | Calibration: Automatically calculate and store calibration parameters |
| Data Table: Instantly access tabular view for detailed dates, times, values, and annotations | Logger Configuration: Easy set up and launch of data loggers with immediate or delayed start, preferred sample rate, and device ID |
| Scaling Options: Autoscale function fits data to the screen, or allows user to manually enter their own values | Communications: Automatically sets up communications port, or lets user select configuration |
| Formatting Options: Change colors, line styles, plotting options, show or hide channels quickly | Printing: Automatically print graphical or tabular data |

*SPECIFICATIONS ARE SUBJECT TO CHANGE WITHOUT NOTICE.
SPECIFIC WARRANTY AND REMEDY LIMITATIONS APPLY.
CALL 1-603-456-2011 OR GO TO WWW.MADGETECH.COM FOR DETAILS.

ORDERING INFORMATION

| <u>Model</u> | <u>Description</u> | <u>Price (U.S.)</u> |
|---------------|--|---------------------|
| TEMPRETRIEVER | Low Cost, Reusable, Temperature Recorder | \$39.00 |
| IFC110 | Software, manual and RS232 interface cable | \$99.00 |
| IFC200 | Software, manual and USB interface cable | \$119.00 |
| NIST | N.I.S.T. Calibration Certificate | Call for Pricing |
| LTC-7PN | Replacement battery for TempRetriever | \$10.00 |

For Quantity Discounts call 603-456-2011 or email sales@madgetech.com

ASK ABOUT OUR OTHER DATA RECORDERS

| | |
|-------------|--------------------|
| Temperature | Pulse/Event/State |
| Humidity | Low Level Current |
| Pressure | Low Level Voltage |
| pH | RF Transmitters |
| Level | Intrinsically Safe |
| Shock | Spectral Vibration |

