

VOLT110-100MV

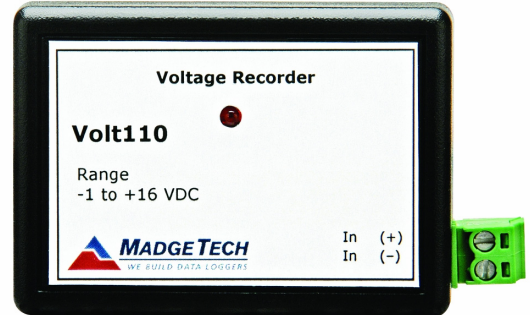
±100MV DIFFERENTIAL VOLTAGE RECORDER

Features

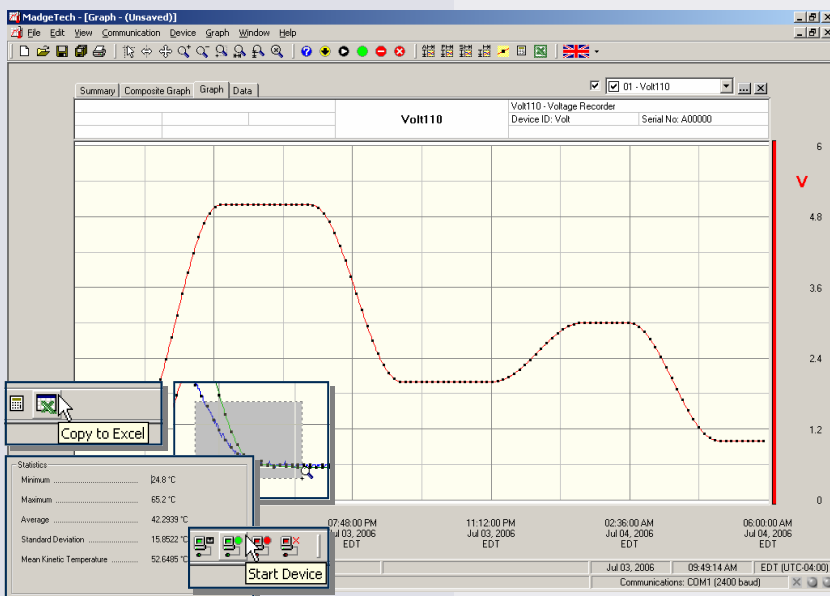
- 10 year battery life
- High speed download
- Real-time operation
- Low cost
- Programmable start time
- Reusable
- Miniature size
- User-friendly

Applications

- Remote data logging
- pH recording
- Low level signal monitoring
- Medical/Pharmaceutical
- Battery studies
- Photovoltaic studies
- Environmental studies
- Replace costly strip chart recorders
- Implement HACCP programs



The Volt110 is a miniature, battery powered, stand alone voltage recorder. The Volt110 features a real-time clock module that extends the battery life to > 10 years and allows for high speed downloads. This is an all-in-one compact, portable, easy to use device that will measure and record up to 32,767 measurements. The storage medium is non-volatile solid state memory, providing maximum data security even if the battery becomes discharged. The device can be started and stopped directly from your computer and its small size allows it to fit almost anywhere. The Volt110 makes data retrieval quick and easy. Simply plug it into an empty COM or USB port and our user-friendly software does the rest.



MadgeTech Data Recorder Software displays voltage data in an easy to use graph.

The Windows®-based software package allows the user to effortlessly collect, display and analyze data. A variety of powerful tools allow you to examine, export, and print professional looking data with just a click of the mouse.

Click [MadgeTech Software](#) for more information or to download the software.

VOLT110-100MV SPECIFICATIONS*

Input Connection: Removable screw terminal	Memory: 32,767 readings; software configurable memory wrap
Voltage Range: $\pm 100\text{mV}$	Reading Interval: 1 reading every second to 1 every 12 hours
Voltage Resolution: $5\mu\text{V}$	Real Time Recording: May be used with PC to monitor and record data in real time
Calibrated Accuracy: $\pm 0.01\%\text{FSR}$	Calibration: Digital calibration through software
Input Impedance: $>1\text{k}\Omega$ $>1\text{M}\Omega$ during acquisition	Calibration Date: Automatically recorded within device
Analog Conversion Time: 133 ms	Power: 3.6V lithium battery included
Frequency Rejection: 60Hz	User Replaceable Battery: 10 years (15 minute reading rate, 25°C)
Temperature Coefficient: $<25\text{ppm}/^\circ\text{C}$; $<10\text{ppm}/^\circ\text{C}$ typical	Data Format: Date and time stamped V, mV, μV , engineering units specified through software
Overload Protection: $\pm 5.0\text{V}$ for 10 seconds	Time Accuracy: ± 1 minute/month (at 20 to 30°C)
Specified Accuracy Range: Nominal range @ 25°C	Computer Interface: PC serial or USB (interface cable required); 57,600 baud
Engineering Units: User may define units up to 10 characters in length. This value is stored within the device.	Software: Windows 95/98/ME/NT/2000/XP based software
Scale Factor: User may program any desired scaling factor from $\pm 1.000\text{E}-31$ to $\pm 9.999\text{E}+31$. The scaling factor is stored within the device.	Operating Environment: -40 to +80°C, 0 to 95%RH non-condensing
Start Time: Software programmable start time and date. Up to six months in advance	Dimensions: 1.7" x 2.8" x 0.8" (44mm x 69mm x 21mm)
	Weight: 1.1 oz (30g)

BATTERY WARNING: FIRE, EXPLOSION, AND SEVERE BURN HAZARD. DO NOT RECHARGE, DISASSEMBLE, HEAT ABOVE 212°F, INCINERATE OR EXPOSE CONTENTS TO WATER.

SOFTWARE FEATURES

Multiple Graphs: Simultaneously analyze data from several units or deployments; easily switch to a single data series	Statistics: Calculate averages, min, max, standard deviation, and mean kinetic temperature with the touch of a button
Real-Time Recording: Collect and display data in real-time while continuing to log	Export Data: Export data in a variety of common formats, or switch to Excel® with a single click
Graphical Cursor: One click displays readings by time, value, parameter or sample number	Calibration: Automatically calculate and store calibration parameters
Data Table: Instantly access tabular view for detailed dates, times, values, and annotations	Logger Configuration: Easy set up and launch of data loggers with immediate or delayed start, preferred sample rate, and device ID
Scaling Options: Autoscale function fits data to the screen, or allows user to manually enter their own values	Communications: Automatically sets up communications port, or lets user select configuration
Formatting Options: Change colors, line styles, plotting options, show or hide channels quickly	Printing: Automatically print graphical or tabular data

*SPECIFICATIONS ARE SUBJECT TO CHANGE WITHOUT NOTICE. SPECIFIC WARRANTY AND REMEDY LIMITATIONS APPLY. CALL 1-603-456-2011 OR GO TO WWW.MADGETECH.COM FOR DETAILS.

ORDERING INFORMATION

Model	Description	Price (U.S.)
VOLT110-100MV	$\pm 100\text{mV}$ Differential Voltage Recorder with 10 year battery	\$299.00
IFC110	Software, manual and RS232 interface cable	\$99.00
IFC200	Software, manual and USB interface cable	\$119.00
NIST	N.I.S.T. Calibration Certificate	Call for Pricing
LTC-7PN	Replacement battery for Volt110	\$10.00

ASK ABOUT OUR OTHER DATA RECORDERS

Temperature	Pulse/Event/State
Humidity	Low Level Current
Pressure	Low Level Voltage
pH	RF Transmitters
Level	Intrinsically Safe
Shock	Spectral Vibration

For Quantity Discounts call 603-456-2011 or email sales@madgetech.com

